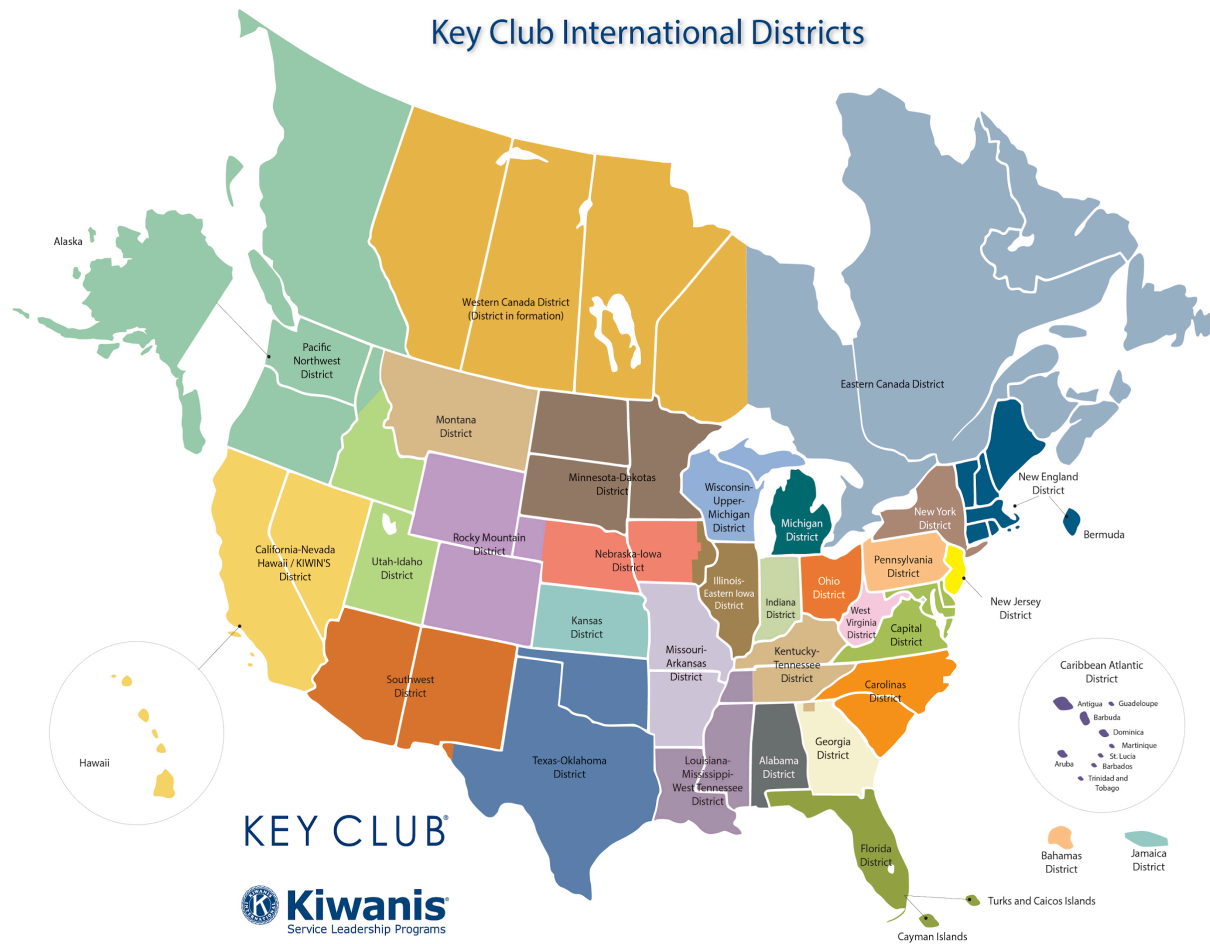
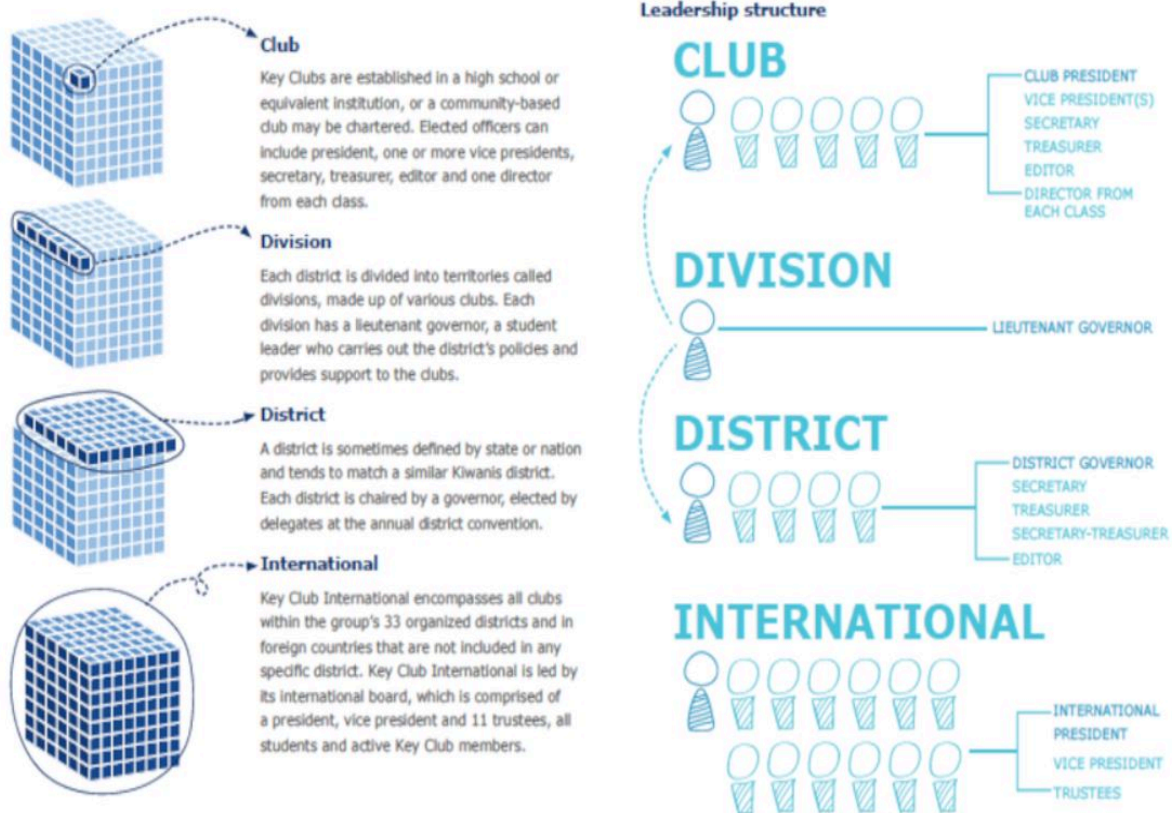


## Districts of Key Club International



## Leadership Structure of Key Club International



### INTERNATIONAL

Key Club is an international organization that exists in the US, Canada and 31 other countries. The Key Club International board consists of an International President, International Vice President, and 11 trustees. A trustee serves as the liaison for 3 districts.

### DISTRICT

Key Club Int'l is divided into 33 districts. We are the Mighty Montana District. There are over 1,000 members in over 38 clubs!

### DISTRICT BOARD

The District Board is made up of the executive board, appointed members, and a Lieutenant Governor from each division within the district. The divisions roughly cover the same area as the Kiwanis divisions. The District Board is monitored and guided by the District Administrator, the Assistant Administrators, and the Kiwanis Governor.

### EXECUTIVE BOARD

District Governor  
Secretary-Treasurer  
Sergeant at Arms

### APPOINTED BOARD

District Webmaster  
Bulletin Editor  
Convention Chair

## **Montana District Key Club Divisions**

### **Division 1:**

- Frenchtown
- Missoula Sentinel
- Missoula Hellgate
- Missoula Big Sky
- Loyola-Sacred Heart
- Florence-Carlton
- Stevensville

### **Division 3:**

- Butte
- Butte Central
- Anaconda
- Dillon

### **Division 4:**

- Billings Senior
- Billings Skyview
- Billings West
- Columbus
- Shepherd

### **Division 5:**

- Miles City
- Glendive
- Sidney
- Terry

### **Division 6:**

- Bozeman
- Gallatin
- Belgrade
- Lewistown
- Harlowton

### **Division 7:**

- Havre
- Malta
- Glasgow
- Shelby

### **Division 8:**

- Eureka
- Polson

### **Division 9:**

- East Helena
- Helena High
- Helena Capital
- Great Falls High
- Great Falls CM Russell High