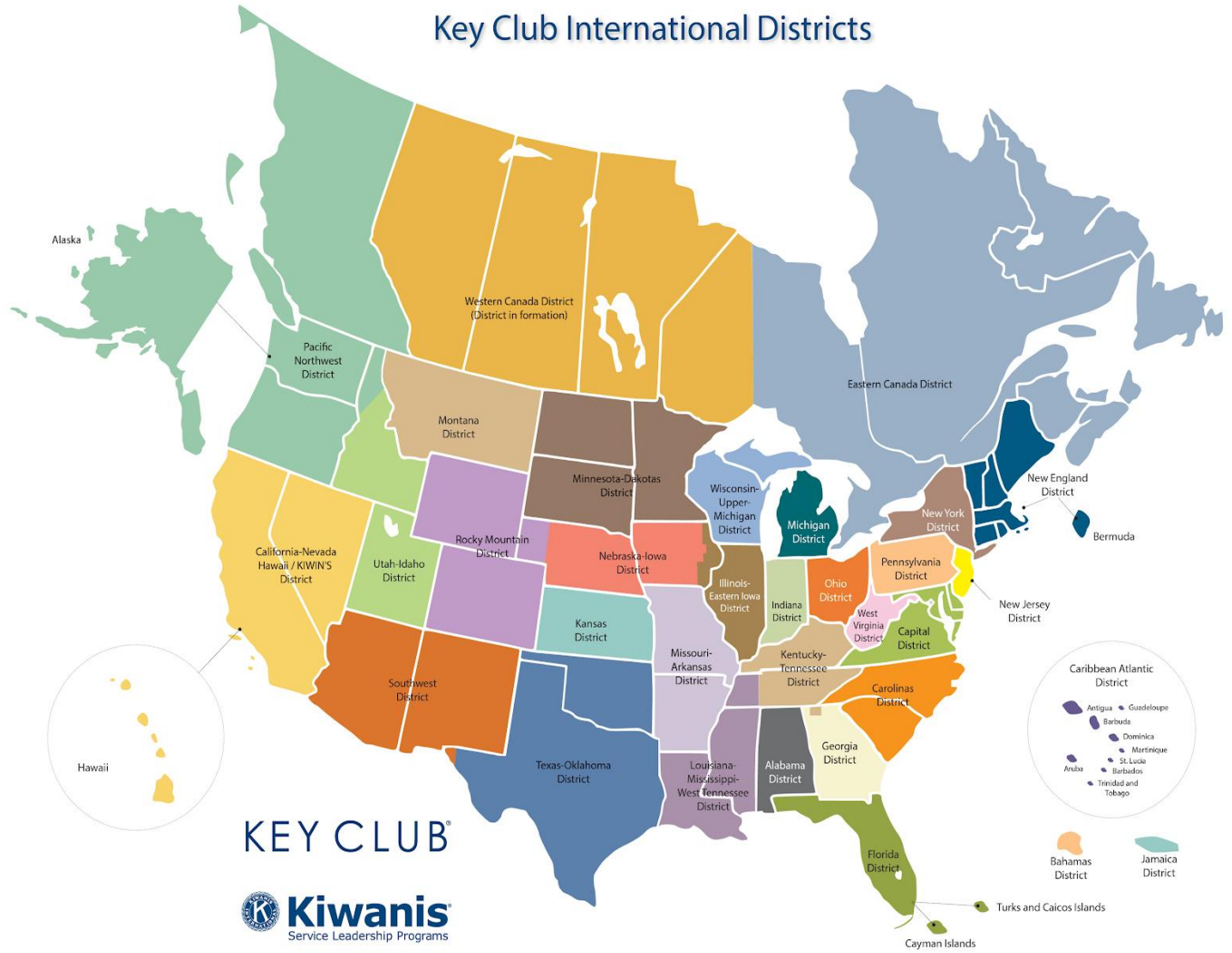
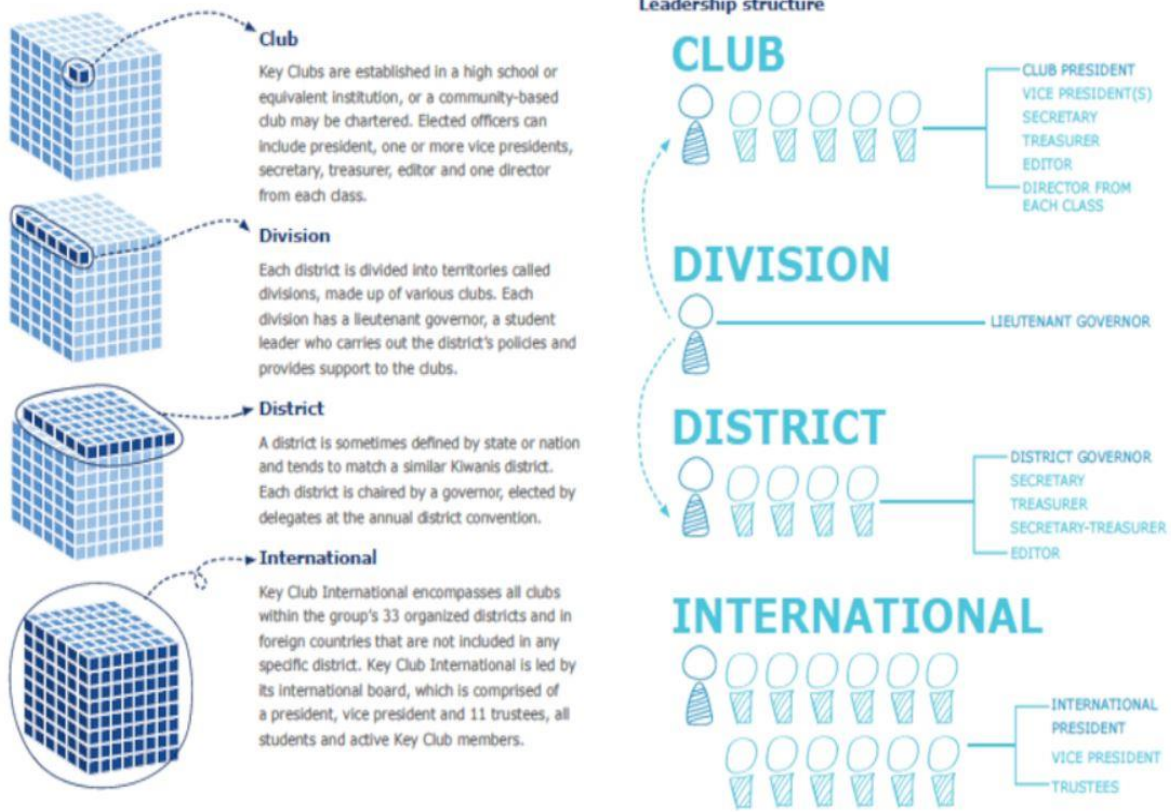


Districts of Key Club International



Leadership Structure of Key Club International



INTERNATIONAL

Key Club is an international organization that exists in the US, Canada and 31 other countries. The Key Club International board consists of an International President, International Vice President, and 11 trustees. A trustee serves as the liaison for 3 districts.

DISTRICT

Key Club Int'l is divided into 33 districts. We are the Mighty Montana District. There are over 1,000 members in over 38 clubs!

DISTRICT BOARD

The District Board is made up of the executive board, appointed members, and a Lieutenant Governor from each division within the district. The divisions roughly cover the same area as the Kiwanis divisions. The District Board is monitored and guided by the District Administrator, the Assistant Administrators, and the Kiwanis Governor.

EXECUTIVE BOARD

District Governor
Secretary-Treasurer
Sergeant at Arms

APPOINTED BOARD

District Webmaster
Bulletin Editor
Convention Chair

Montana District Key Club Divisions

Division 1:

- Frenchtown
- Missoula Sentinel
- Missoula Hellgate
- Missoula Big Sky
- Loyola-Sacred Heart
- Florence
- Stevensville
- Hamilton

Division 2: Dissolved in conjunction with Kiwanis divisions

Division 3:

- Butte High
- Butte Central
- Anaconda
- Dillon

Division 4:

- Billings Senior
- Billings Skyview
- Billings West
- Columbus
- Hardin
- Shepherd

Division 5:

- Miles City
- Glendive & Terry
- Sydney

Division 6:

- Bozeman
- Gallatin
- Belgrade
- Lewistown
- Harlowton

Division 7:

- Havre
- Malta
- Glasgow
- Shelby

Division 8:

- Eureka
- Polson
- Columbia Falls

Division 9:

- East Helena High
- Helena High
- Helena Capital
- Great Falls High
- CMR High
- GF Central Catholic